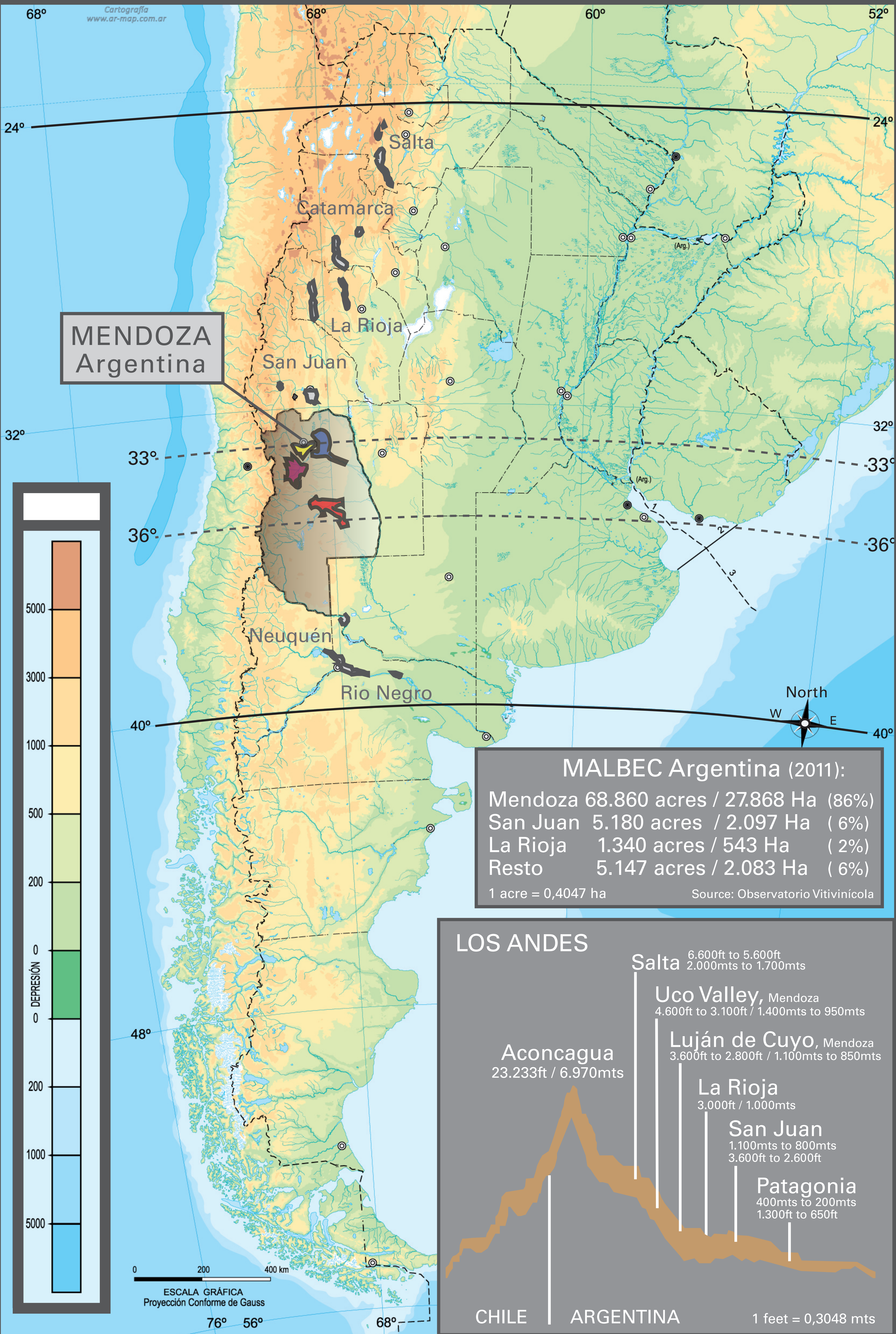




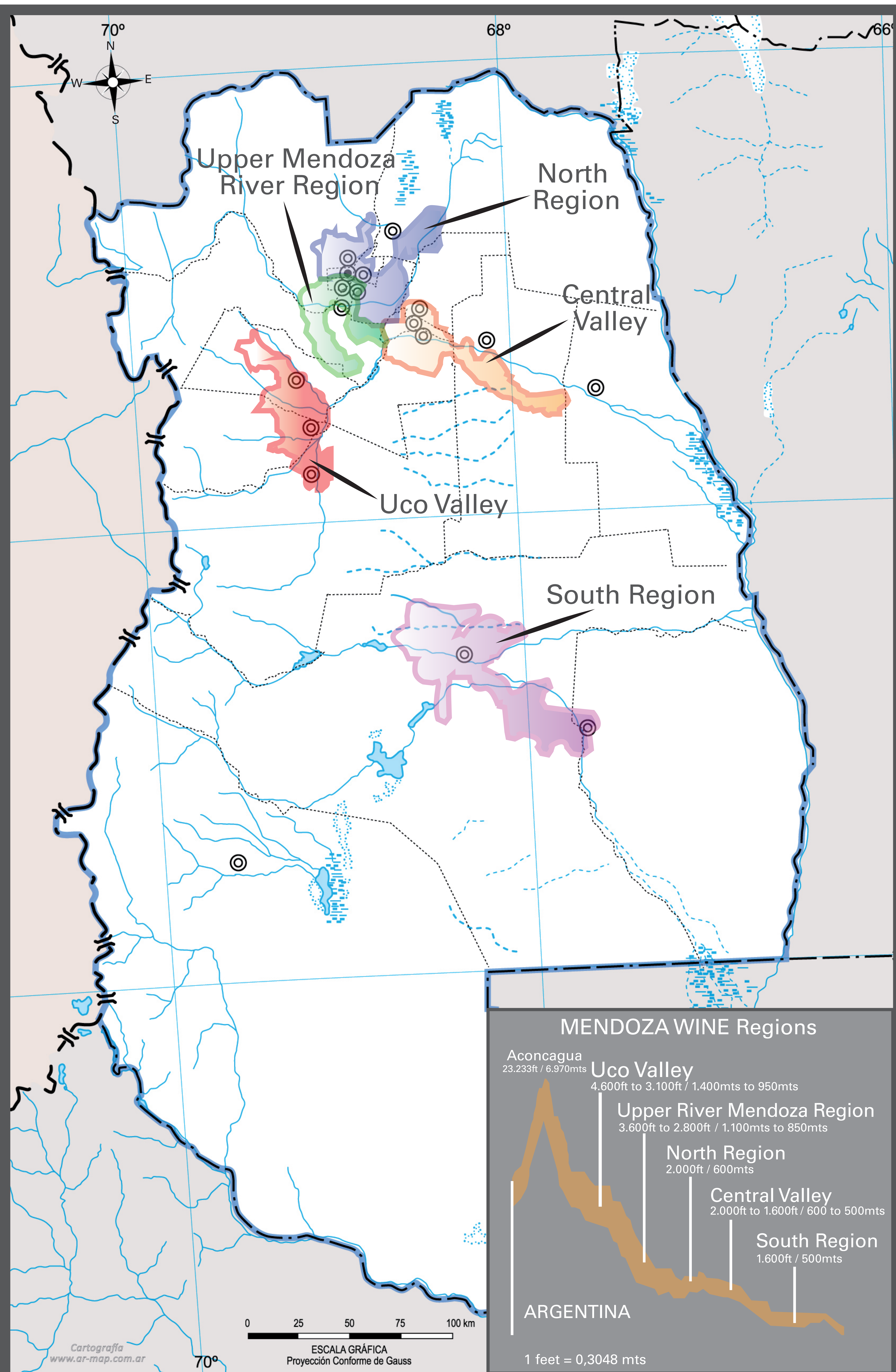
Argentina Wine Regions

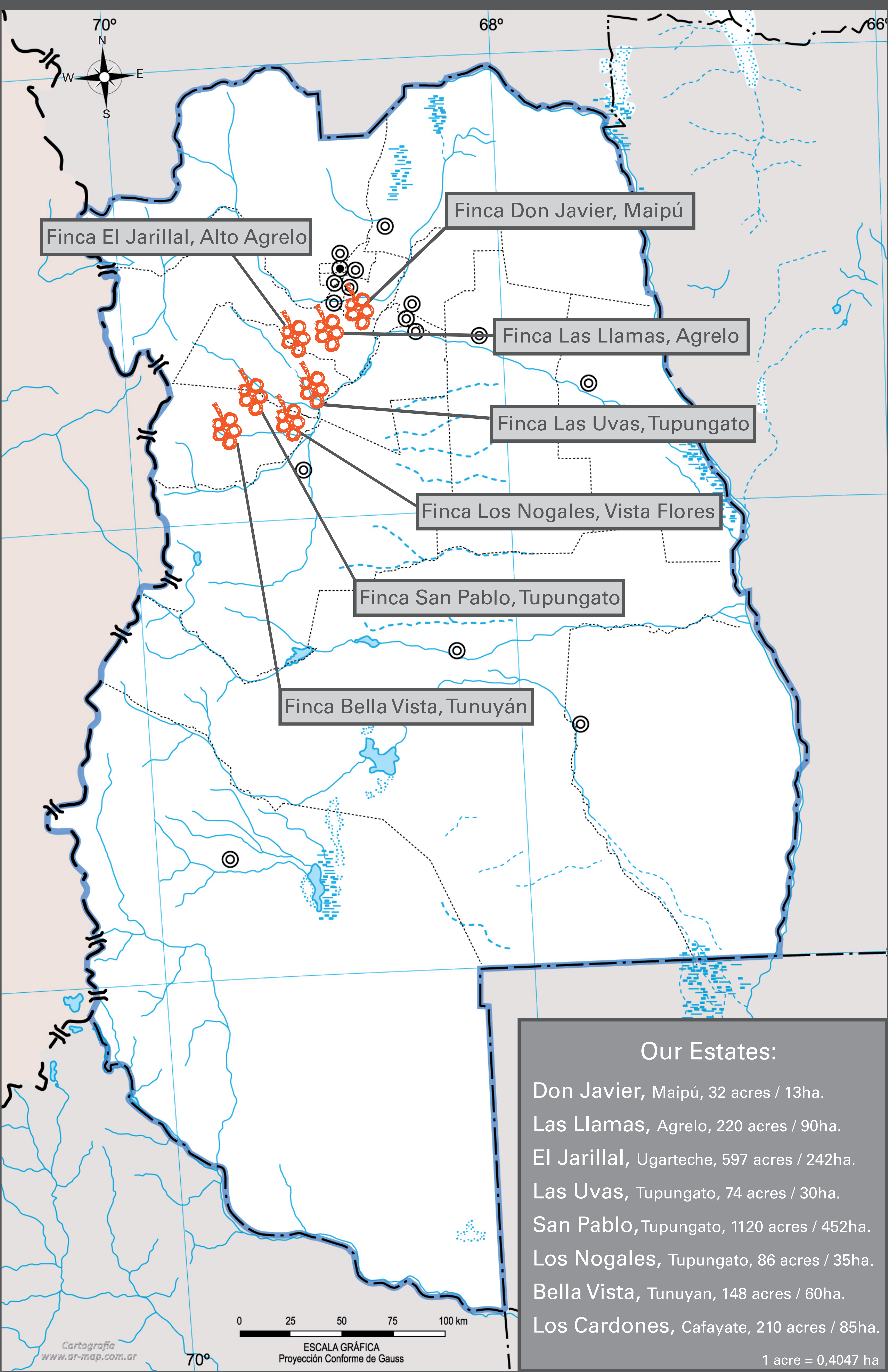




B O D E G A T A P I Z

Mendoza Wine Regions





ZOLO & TAPIZ

Estate Vineyards

Fincas Patagonicas winery (Zolo and Tapiz) selects grapes from estate vineyards throughout the different key regions of Mendoza, the largest and most important wine region in Argentina. Located at various altitudes and composing diverse soils, each of these *terroirs* provides a different expression of fruit and varietal concentration, out of which vineyard manager Carlos Correas and winemaker Fabian Valenzuela blend the best *tapiz* (tapestry). Fincas Patagonicas estate vineyards include:

- 198 acres (92 planted) in **Agrelo**, Luján de Cuyo, along the Ruta del Vino, or Wine Route, that connects a number of renowned Mendoza wineries. These vineyards surround the Bodega Tapiz winery in Agrelo, “the Land of Malbec,” and produce the classic Malbec plum aroma.
- 994 acres (158 planted) in **San Pablo**, in the Valle de Uco near the town of Tupungato at the base of the Andes. At close to 4,600 feet (1,400 meters) in elevation, this is one of the highest vineyards in Argentina, and produces very concentrated and structured wines with principally floral aromas.
- 66 acres (62 planted) near 3,600 feet (1,100 meters) in La Arboleda, **Tupungato**, Valle de Uco. The altitude provides structure and concentration, and the *terroir* provides principally dark fruit aromas.
- 30 acres (21 planted with vines and 9 with olive trees) of vineyards and olive trees in **Maipú** that surround Club Tapiz and Casa Zolo. These vineyards are 70 years old and produce red fruit aromas.
- 75 acres (all planted) near 3,600 feet (1,100 meters) in **Vista Flores**, Tunuyán, Valle de Uco. This *terroir* is famous for producing wines with excellent structure, color, and berry and floral aromas.
- 532 acres (88 planted) in **Ugarteche**, Luján de Cuyo (Alto Agrelo). This vineyard, located at 3,440 feet (1,050 meters) has a relatively steep slope, which is important to avoid frost in this cool area. This *terroir* produces intense fruity wines, yet with elegance, which comes from a slow, correct ripening.
- In Development: New vineyards in **Salta**.



LEARN MORE AT WWW.VINODELSOL.COM